

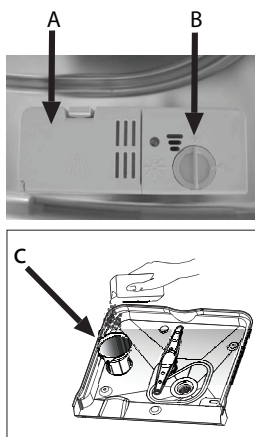
Description



1. 'Selected cycle' indicators
2. Water softener and rinse agent indicators
3. Programme button
4. On/Off button
5. On/Off indicator

Operation

Switching on



1. Check that the plug of the connecting cable is in the socket and that the tap is open (if the tap is still closed, the 'quick cycle' indicator will flash).
2. Load the dishwasher.
3. Put the detergent/tablet in the detergent tray (A) and fill the rinse agent reservoir (B) and the salt reservoir (C), if needed.
 - If you use dishwasher tablets that contain salt and rinse agent, you do not have to add them separately.
4. Press the On/Off button.
5. Select a programme; press the programming button repeatedly until the corresponding 'selected programme' indicator lights up.
6. Close the door of the dishwasher.

The dishwasher will automatically start running the selected programme.

 - Once the programme has completed, an audible signal will sound for eight seconds. Open the door and switch off the dishwasher with the On/Off button.

Stopping or changing a programme

Open the door and press the 'programme button' for at least three seconds.
You will hear an audible signal.

- Select another programme if necessary and close the door.



Please note! A programme that has already begun can only be changed in the start-up phase. After this, the detergent will be sprayed all over the dishes or the machine may have already pumped out the water. In that instance, you must refill the detergent compartment.






Warning! Opening the door fully during the wash cycle is dangerous. You may be splashed with hot water from the machine.

Water softener and rinse agent indicators

Light	Description
	The rinse agent indicator light switches on when the rinse agent reservoir needs to be replenished. <ul style="list-style-type: none"> • If you use dishwasher tablets that contain salt and rinse agent, you do not have to replenish the reservoir.
	The salt indicator light switches on when the salt reservoir needs to be replenished. The indicator lamp will stay flashing for a number of hours after you have replenished the reservoir. <ul style="list-style-type: none"> • If you use dishwasher tablets that contain regenerable salt, you do not have to replenish the reservoir.

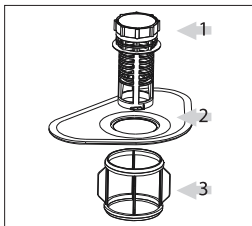
Wash programmes

Programme	Programme description
	Normal programme Programme for normally soiled dishes, but also tableware with dried-up remnants such as plates, trays, cups, glasses, etc.
	Eco programme For normally soiled dishes. Use this programme if you wish to save energy.
	Quick programme Lightly soiled dishes, such as glasses, crystal and fragile porcelain. No drying.

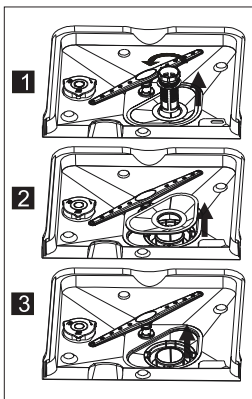
Maintenance and cleaning

Removing and cleaning the filters

Depending on usage, the filters may require regular rinsing under a tap. The filter group consists of three components: the large filter, the coarse filter and the fine filter.



1. Large filter; Leftover food and waste that lands on this filter is rinsed through to the coarse filter by a special jet on the lower spray arm.
2. Coarse filter; Larger articles, such as leftover bones or pieces of glass that could block the drain, are trapped in the coarse filter.
3. Fine filter; This filter prevents waste and leftover food from entering the drainage pump and ensures that said leftovers are not spread over the dishes again during the cycle.



In order to ensure the dishwasher operates at maximum efficiency, the filter section must be cleaned. The filter section efficiently removes food remnants from the water and ensures that the water is able to continue circulating throughout the wash cycle. Remove larger food remnants from the filter section after each wash cycle, by cleaning the half-round filter and filter housing under running water.

- Remove the filter section by turning it to the left and removing it upwards.
- All components in the filter section must be cleaned at least once per month.
- Use a dishwashing brush to clean the coarse and fine filter.
- Re-fit the whole filter section back into the tub of the dishwasher.



Never use the dishwasher without the filter section. Incorrect fitting of the filter section will result in the dishwasher no longer delivering maximum performance. Damage to cutlery and dishes is a further possible consequence.

Error codes

Error code	Fault
The 'quick cycle' indicator is flashing.	The appliance does not fill up with water. Check the water supply.
The 'normal cycle' indicator is flashing.	The appliance is not draining water. Check the outlet hose.

Should the appliance become overfilled or exhibit excessive leaking, shut off the inlet tap and alert the service department.



See the manual for additional user information and safety instructions.